



TEST REPORT  
ON  
1 TO 18.2 GHz  
SINGLE POLE TWO THROW  
ABSORPTIVE / NON-REFLECTIVE SWITCH MODULE

AMC MODEL No:  
**MSN-2DT-05-STANDARD**  
OPTION 118, 12X, LVT

Serial Numbers: 2MS909672 THRU 2MS909681

DESIGNED  
BY  
R. Afable

TESTED  
BY  
R. Butler & H. Hahn

REPORTED  
BY  
E. Elder

October 26, 2004

*JDT H DRH PA  
JKM  
Elder mjs  
Paw*

AMERICAN MICROWAVE CORPORATION., 7311-G Grove Road, Frederick, MD 21704  
Tel: 301-662-4700 • Fax: 301-662-4938 • Email: [sales@americanmicrowavecorp.com](mailto:sales@americanmicrowavecorp.com)  
Website: <http://www.americanmicrowavecorp.com>

**ISO9001 : 2000 CERTIFIED**

## TABLE OF CONTENTS

●	PRODUCT DESCRIPTION AND ELECTRICAL SPECIFICATIONS	PAGE 3
●	PRODUCT FEATURE AND ENVIRONMENTAL SPECIFICATIONS	PAGE 4
●	OUTLINE DRAWING	PAGE 5
●	FUNCTIONAL SCHEMATIC	PAGE 6
●	TEST DATA ON MSN-2DT-05-STANDARD OPTION 118, 12X, LVT SERIAL NUMBERS 2MS909672 THRU 2MS909681	PAGE 7
●	TEST DATA FOR MSN-2DT-05-STANDARD OPTION 118, 12X, LVT SERIAL NUMBER 2MS909672	PAGE 8
●	TEST DATA FOR MSN-2DT-05-STANDARD OPTION 118, 12X, LVT SERIAL NUMBER 2MS909673	PAGE 9
●	TEST DATA FOR MSN-2DT-05-STANDARD OPTION 118, 12X, LVT SERIAL NUMBER 2MS909674	PAGE 10
●	TEST DATA FOR MSN-2DT-05-STANDARD OPTION 118, 12X, LVT SERIAL NUMBER 2MS909675	PAGE 11
●	TEST DATA FOR MSN-2DT-05-STANDARD OPTION 118, 12X, LVT SERIAL NUMBER 2MS909676	PAGE 12
●	TEST DATA FOR MSN-2DT-05-STANDARD OPTION 118, 12X, LVT SERIAL NUMBER 2MS909677	PAGE 13
●	TEST DATA FOR MSN-2DT-05-STANDARD OPTION 118, 12X, LVT SERIAL NUMBER 2MS909678	PAGE 14
●	TEST DATA FOR MSN-2DT-05-STANDARD OPTION 118, 12X, LVT SERIAL NUMBER 2MS909679	PAGE 15
●	TEST DATA FOR MSN-2DT-05-STANDARD OPTION 118, 12X, LVT SERIAL NUMBER 2MS909680	PAGE 16
●	TEST DATA FOR MSN-2DT-05-STANDARD OPTION 118, 12X, LVT SERIAL NUMBER 2MS909681	PAGE 17

## SINGLE POLE TWO THROW ABSORPTIVE / NON-REFLECTIVE SWITCH MODULE AMC MODEL No: MSN-2DT-05-STANDARD OPTION 118, 12X, LVT

### FEATURES:

- **LOW INSERTION LOSS**
- **HIGH ISOLATION**
- **LOW VIDEO TRANSIENTS**
- **LOW HARMONIC DISTORTION**

### SPECIFICATIONS:

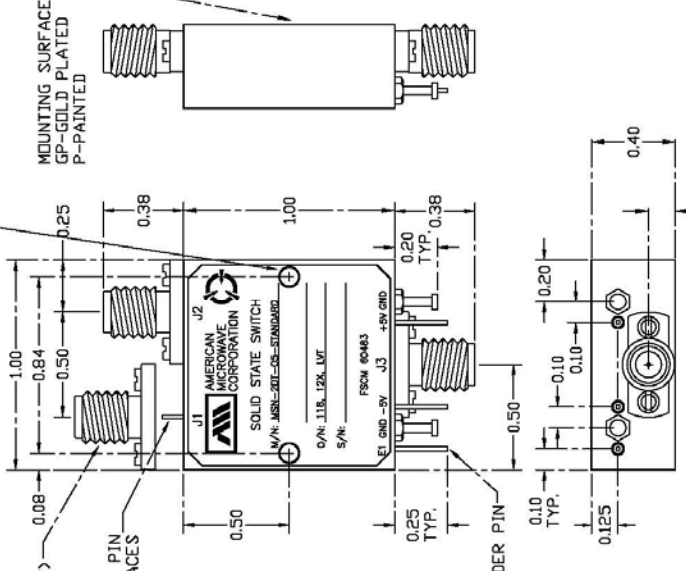
- FREQUENCY : 1 TO 18.2 GHz
- INSERTION LOSS : 3.5 dB MAXIMUM
- ISOLATION : 60 dB MINIMUM
- VSWR : 2.5:1
- SWITCHING SPEED : < 30 ns
- RISE / FALL TIME : < 10 ns
- MAXIMUM TOGGLE RATE : > 20 ns
- RF CONNECTORS : SMA FEMALE
- DC POWER SUPPLY : +5 V  $\pm$ 10% @ 100 mA MAXIMUM  
-5 V  $\pm$ 10% @ 100 mA MAXIMUM
- CONTROL : TTL LOGIC "0"=ON J3-J1, "1"=ON J3-J2
- CONTROL INTERFACE : DC SOLDER PINS
- HARMONIC DISTORTION :  $\leq$  70 dB @ +10 dBm I/P
- FLATNESS ACROSS BAND (ON STATE) :  $\pm$ 1.5 dB,  $\pm$ 1.0 dB TYPICAL
- VIDEO LEAKAGE : 100 mV PEAK TO PEAK, 20 MHz BANDWIDTH (-60 dBm TO -65 dBm LEAKAGE POWER OR ENERGY IN THE BAND OF INTEREST)
- 1 dB COMPRESSION POINT : +20 dBm
- 2 TONE 3<sup>RD</sup> ORDER INTERCEPT POINT, P<sub>OUT</sub> 0dBm : +35 dBm
- 2 TONE 2<sup>ND</sup> ORDER INTERCEPT POINT, P<sub>OUT</sub> 0dBm : +55 dBm
- 0.1 dB PASS BAND : 1 GHz TO 18.2 GHz
- 1 dB COMPRESSION POINT : +20 dBm

**PRODUCT FEATURE**

ZONE	REV.	REVISIONS	DATE	APPROVED
-	-	ORIGINAL RELEASE	8/2/99	[Signature]

DESCRIPTION: ANIC MODEL MSN-2DT-05-STANDARD OPTION 118, 12X, LVT IS A SINGLE POLE TWO THROW, ABSORPTIVE/NON-REFLECTIVE SWITCH MODULE WITH VERY LOW INSERTION LOSS, HIGH ISOLATION AND WITH INTEGRAL TTL DRIVER, DESIGNED FOR LOW VIDEO TRANSIENTS, LOW HARMONIC DISTORTION AND BROAD BAND OPERATIONS.

REMOVABLE SMA (F) 3 PLACES  
 REMOUNTING SURFACE GP-GOLD PLATED P-PAINTED  
 Ø0.089 THRU, TAP WITH 4-40 THD 0.250 DEEP ON MOUNTING SURFACE. 2 PLACES.



Ø0.015 RF PIN 3 PLACES  
 Ø0.020 SOLDER PIN 3 PLACES  
 0.125 (GP)  
 0.127 (CP)

NOTE: DT=WITH DRIVER, NON-REFLECTIVE/ABSORPTIVE

PART NO.	APPROVALS	DATE	TITLE	DRAWN	CHECKED	SIZE	FORM NO.	REV.
		8/2/99	PRODUCT FEATURE MSN-2DT-05-STANDARD OPTION 118, 12X, LVT SOLID STATE SWITCH	WJG		A	60483	100-3922-3
								SHEET 1 of 3

M/N = MANUFACTURER PART NUMBER  
 O/N = OPTION NUMBER  
 S/N = SERIAL NUMBER

ALL DIMENSIONS ARE IN INCHES  
 TOLERANCES:  
 X.XX ±0.020  
 X.XXX ±0.010

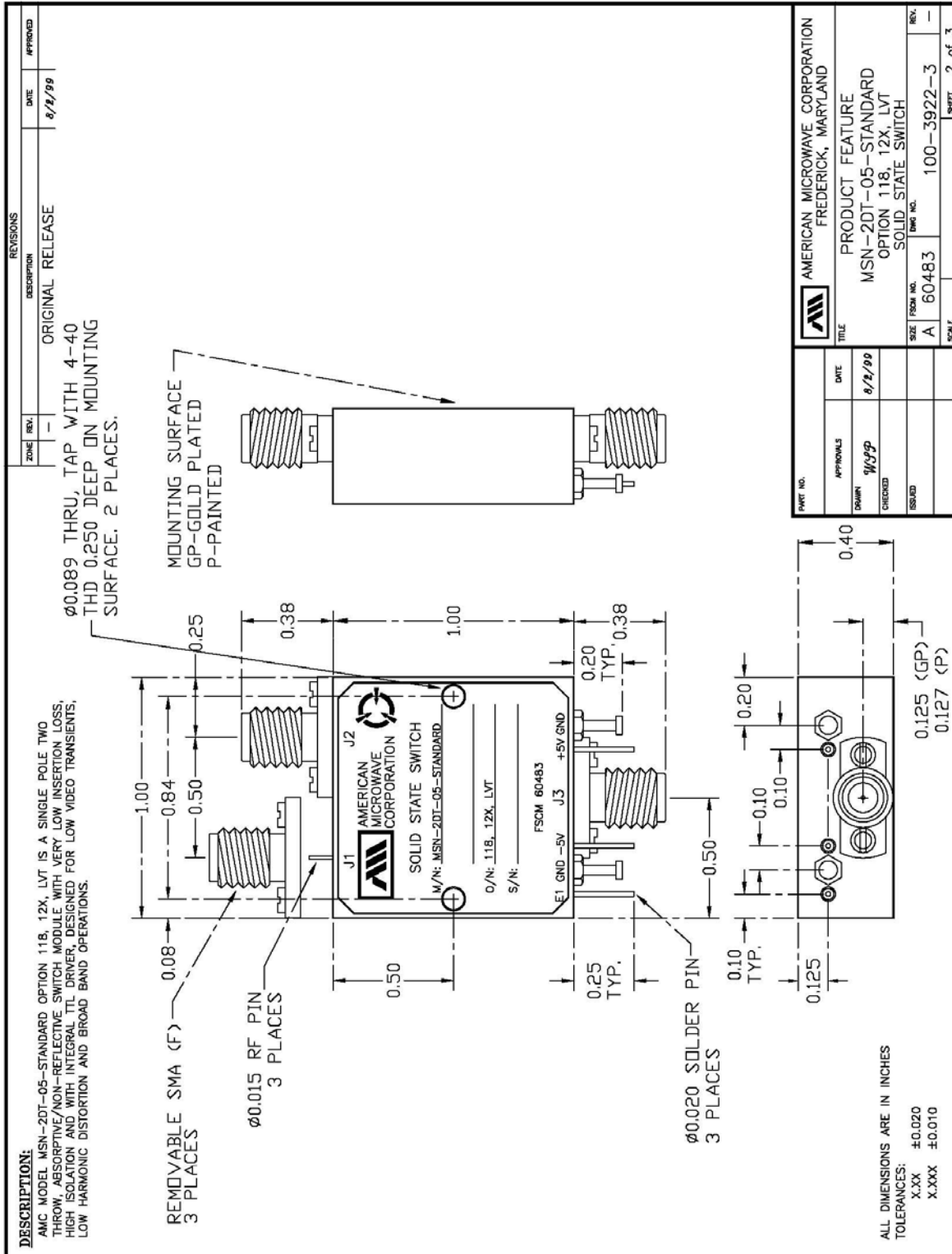
**ENVIRONMENTAL RATINGS:**

- TEMPERATURE: -10°C TO +55°C (OPERATING)  
-40°C TO +71°C (STORAGE)
- HUMIDITY: 95% OVER TEMPERATURE
- SHOCK: MIL-STD-202F, METHOD 213B COND. B
- VIBRATION: MIL-STD-202F, METHOD 204D COND. B
- ALTITUDE: MIL-STD-202F, METHOD 105C COND. B
- TEMPERATURE CYCLE: MIL-STD-202F, METHOD 107D COND. A

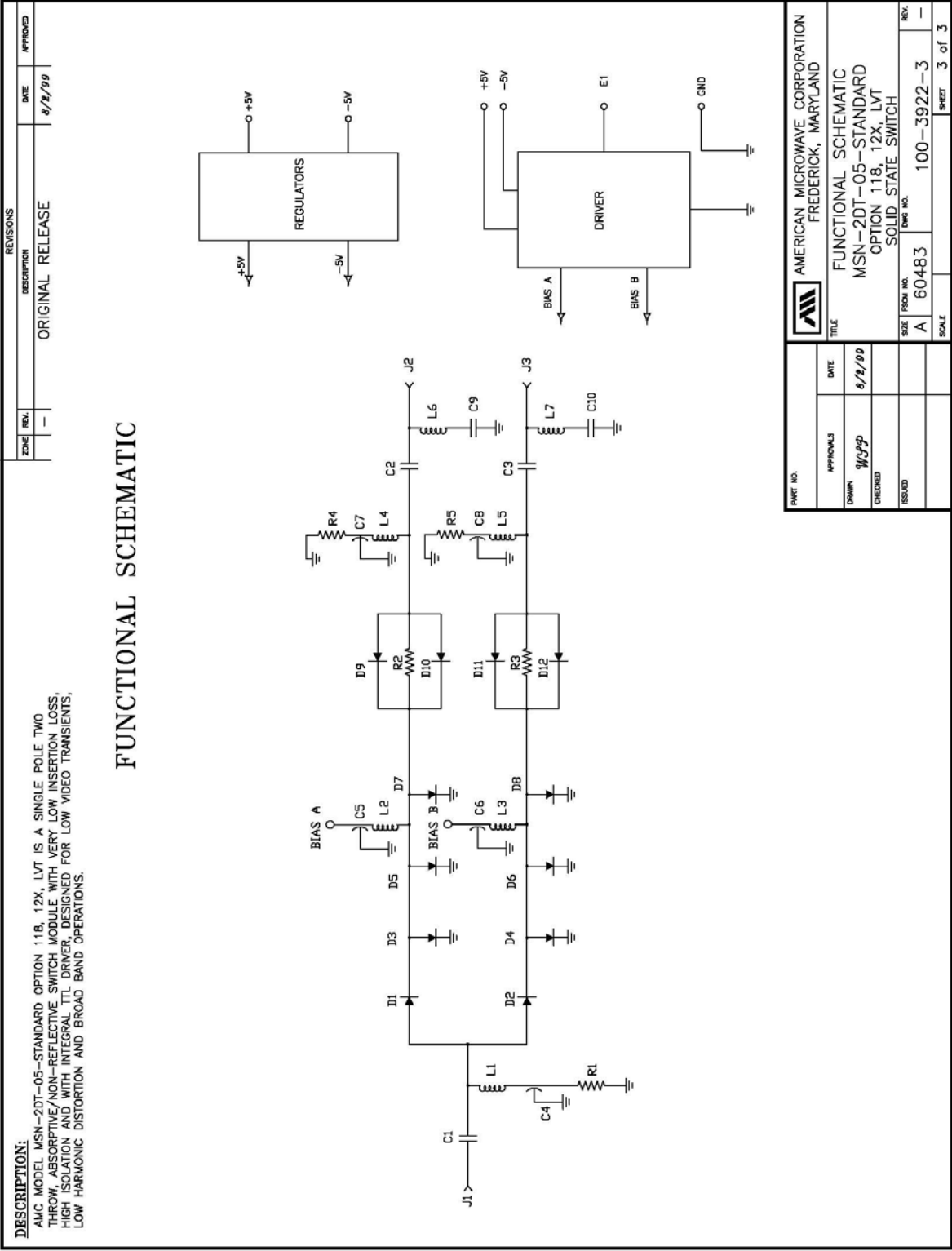
NOTE: THE ABOVE SPECIFICATIONS ARE SUBJECT TO CHANGE OR REVISION

AMERICAN MICROWAVE CORPORATION, 7311-G Grove Road, Frederick, MD 21704  
 Tel: 301-662-4700 • Fax: 301-662-4938 • Email: [sales@americanmicrowavecorp.com](mailto:sales@americanmicrowavecorp.com)  
 Website: <http://www.americanmicrowavecorp.com>

**OUTLINE DRAWING**



**FUNCTIONAL SCHEMATIC**



<b>AMERICAN MICROWAVE CORPORATION</b> FREDERICK, MARYLAND	
<b>TITLE</b>	FUNCTIONAL SCHEMATIC
<b>DATE</b>	8/2/99
<b>DRAWN</b>	WSP
<b>CHECKED</b>	
<b>ISSUED</b>	
<b>SIZE</b>	A
<b>FROM NO.</b>	60483
<b>REV.</b>	100-3922-3
<b>SCALE</b>	
<b>SHEET</b>	3 of 3

## FINAL TEST DATA

FINAL TEST DATA SHEETS

FOR

AMC MODEL NUMBER

**MSN-2DT-05-STANDARD**  
**OPTION 118, 12X, LVT**

Serial Numbers:

**2MS909672 THRU 2MS909681**





























**FINAL TEST DATA**

AMC MODEL NO: MSN-2DT-05-STANDARD OPTION 118, 12X, LVT SERIAL NUMBER: 2MS909681

AMERICAN MICROWAVE CORPORATION  
 7311-G GROVE RD., FREDERICK MD. 21704  
 TEL: 301-662-4700 FAX: 301-662-4938

FINAL TEST DATA  
 ON  
 MICROWAVE SWITCH

DATE: 11-30-99

CUSTOMER: Telemus      TECHNICIAN: H. Hehn  
 JOB NO: 907133E-2  
 MODEL NO: MSN-2DT-05-STANDARD      OPTION NO: LVT, 12X, 118  
 SERIAL NO: 2MS909681      SPECIFICATION: MLL-STD 454  
 CURRENT DRAW: +5VDC @ 50 mA; -5VDC @ 50 mA      FREQUENCY RANGE: 1-18.2 GHz

INSERTION LOSS (WORST CASE)	RETURN LOSS (WORST CASE)					
	INPUT dB	INPUT VSWR	OUTPUT ON dB	OUTPUT ON VSWR	OUTPUT OFF dB	OUTPUT OFF VSWR
<u>J3-J1 4.06 dB</u>	<u>11.97 dB</u>	<u>1.67 : 1</u>	<u>9.63 dB</u>	<u>1.99 : 1</u>	<u>7.66 dB</u>	<u>2.44 : 1</u>
<u>J3-J2 3.60 dB</u>	<u>7.92 dB</u>	<u>2.34 : 1</u>	<u>8.48 dB</u>	<u>2.21 : 1</u>	<u>9.33 dB</u>	<u>2.04 : 1</u>
dB	dB	1. : 1	dB	1. : 1	dB	1. : 1
dB	dB	1. : 1	dB	1. : 1	dB	1. : 1
dB	dB	1. : 1	dB	1. : 1	dB	1. : 1
dB	dB	1. : 1	dB	1. : 1	dB	1. : 1
dB	dB	1. : 1	dB	1. : 1	dB	1. : 1
dB	dB	1. : 1	dB	1. : 1	dB	1. : 1
dB	dB	1. : 1	dB	1. : 1	dB	1. : 1

ISOLATION	SWITCHING SPEED			
	DELAY ON	RISE TIME	DELAY OFF	FALL TIME
<u>J3-J1 &gt; 60 dB</u>	<u>12 nS</u>	<u>4 nS</u>	<u>19 nS</u>	<u>10 nS</u>
<u>J3-J2 &gt; 60 dB</u>	<u>18 nS</u>	<u>6 nS</u>	<u>14 nS</u>	<u>4 nS</u>
dB	nS	nS	nS	nS
dB	nS	nS	nS	nS
dB	nS	nS	nS	nS
dB	nS	nS	nS	nS
dB	nS	nS	nS	nS
dB	nS	nS	nS	nS
dB	nS	nS	nS	nS

NOTE: Any additional test data on back

TESTED ON: Wiltron 37347A

QA/QC APPROVAL: 70 RA

DATED: DEC 07 1999